

Bright Castle Group.

Waterproofing & Paints...

27, SaiSrushti, Near Bhumkar Bridge Narhe-411041

Contact

7559179180

www.BrightCastleGroup.com

BrightCastleGroup@gmail.com



GSTIN : 27BVHPP2820E1ZP

PAN : BVHPP2820E

Date :

Dear sir/Madam;

Subject : Introduction as a Waterproofing firm.

We would proud to introduce our-self as leading Waterproofing & Structural repair firm based in Pune from 2010. We do provide all type of Waterproofing services & Structural repairs in Maharashtra region as well expanding our borders also.

There are vast varieties of Waterproofing products / chemicals available world wide but we confidently recommend and deals with MARIS POLYMERS, KEMPER, WEBER, KERAKOLL, MAPAI, PAREX-SIKA-APURVA etc.

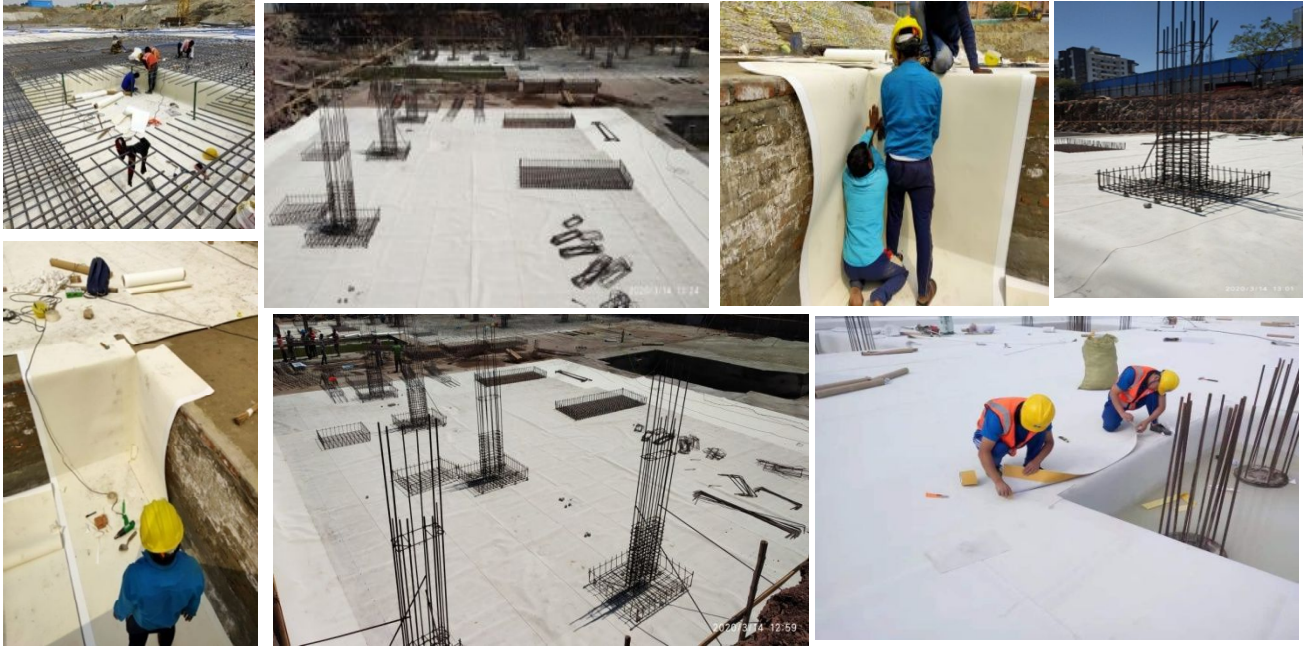
Our General work methodology for any type of waterproofing treatment:

- 1 Cleaning the surface with help of mechanical chipper angle grinder, wire brush to remove dust, dirt, fungus, loose foreign particles. (We think Surface preparation is most important in waterproofing)
- 2 Opening cracks, construction joints, concrete casting joints in V grooves and filling the same with non-shrinkable grouts.
- 3 For Live sources we do socketing and grouting.
- 4 Chemical coating as per site conditions defers.
- 5 Fleece/ Geo Textile application for floor as well skirting areas.
- 6 Final chemical coating.
- 7 Ponding testing.
- 8 Protection Layer (BaseCoat, IPS, Screed, BrickBat)

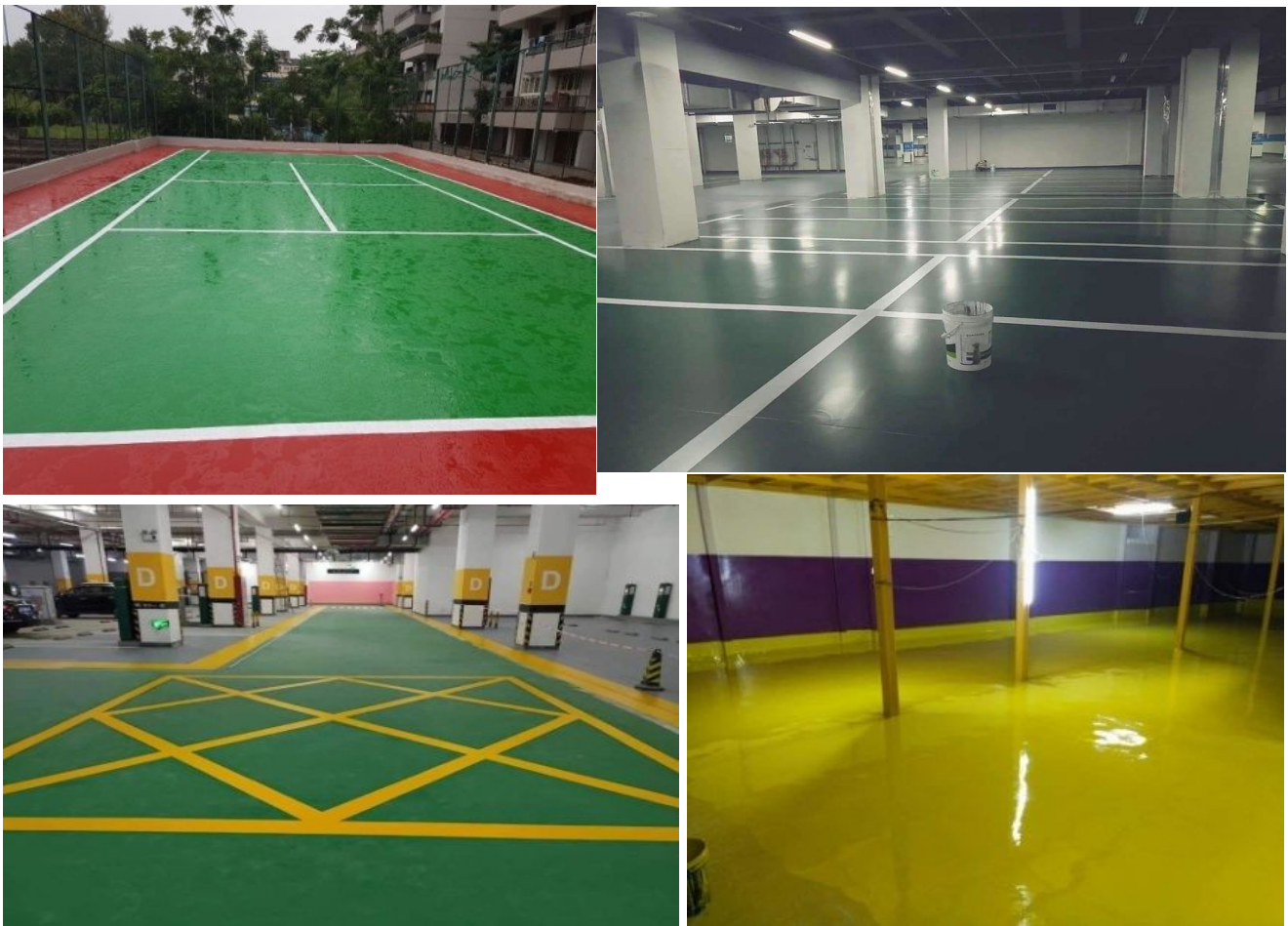
We do provide:

- ☉ Waterproofing for commercial, Residential, Industrial projects.
- ☉ Epoxy Coatings.
- ☉ PU/Acrylic base coatings.
- ☉ Metal/Wood/Sloping roofs coatings.
- ☉ Swimming pools, Car Parking, Basement Etc.
- ☉ APP, HDPE, cold-Hot membrane.
- ☉ Expansion Joint Treatment.
- ☉ Grouting and Socketing.
- ☉ BrickBat Coba, IPS, Screeding, BaseCoat etc.

HDPE Work.



Epoxy Works

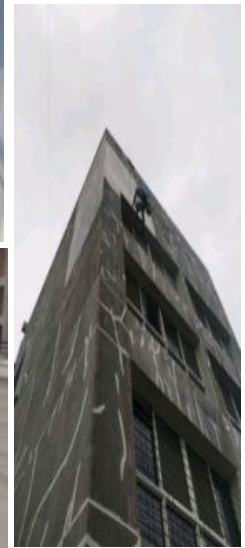
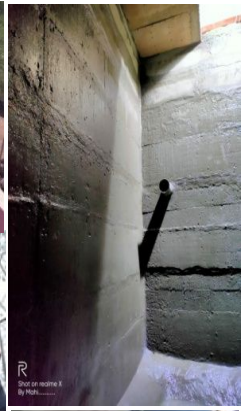


PU/Acrylic Base coatings.



MISC WORKS





Our Prestigious Clients

Sr.	Client Name	Site Name	Work Done.
1	Amit Builders	BloomField, Ambegaon	Sunken, UGWT, OHWT, Terraces, Podiums etc.
		Colori & Classic, Undri	Sunken, UGWT, OHWT, Terraces, Podiums etc.
		Montecito, Sahkarnagar.	Sunken, UGWT, OHWT, Terraces, Podiums etc.
2	CocaCola India Pvt. Ltd	Pirangut Plant	Terrace waterproofing & Epoxy work of Food Grade
3	LG India Pvt. Ltd	RanjanGaon Plant.	Tin shade joint treatment
4	Goel Ganga India Pvt. Ltd	Bavdhan site Ganga Legend	Retaining wall, Raft Waterproofing,
5	UBC Kondhawa	Kondhwa site.	HDPE Work
6	Clover Builders.	Windermere	ClubHouse Treatment
		Casablanca	Joint Treatment
7	JaiKumar Constructions Ltd.	Parksyde Homes, Nashik.	Podium Waterproofing,
8	Raviraj Builders	misc site.	Repair Works
9	Janki Construction	Janki Rainbow	Total Waterproofing work
10	Schmalz India Pvt. Ltd	SanasWadi	WC/Bath Waterproofing
11	Marquardt	Hinjewadi Phase 3	Thermal Scan/PU Injection
12	Hikal India Pvt Ltd.	Hinjewadi	Injection, Joint treat, Outer wall
13	Mazak India Pvt. Ltd	SanasWadi	WC/Bath Waterproofing
14	IndoSpace B400	RanjanGaon Plant.	WC/Bath Waterproofing
15	Mann-Hummel	Banglore MIDC Tumkur.	WC/Bath Waterproofing
16	Arvind Bel Air	Banglore Jalahali Cross	Sunken treatments (4 Towers)
17	Painteriors	MCA Gehunje Stadium	Joint Treatment, Supply Coating.
18	And more than 100+ Projects of private satisfied clients and counting is still on....		

Quotation

General Rates for Waterproofing & Painting work.

Sr.	Description	Details	Unit	Rate
A	Waterproofing works			
1	BrickBat Coba Waterproofing	Only Labours	Sq.ft	35/-
2	Screed work	Only Labours	Sq.ft	28/-
3	P.C.C	Only Labours	Sq.ft	22/-
4	Bathroom BrickBat Coba	(Below 50 Sq.ft)	Nos	3800/-
5	Bathroom Tile Grouting (Joint Filling)	with Cement Grouts	Nos	4000
6	Bathroom Tile Grouting (Joint Filling)	with Epoxy Grouts	Nos	7000
7	Breaking of Surface and Disposal of Rabbit	Labour Work	Sq.ft	55/-
8	Joint Treatment (Wall- Patra Joint , Corner treatment Joint)	surface preparation - primer coating - 2 coat chemical of Acrylic base (Sika, Arment, Dr.FixIt Equivalent)	R.ft	450/-
9	Expansion Joint Treatment	surface preparation- Baker rod insertion in joint - sealant filling and levelling - primer coating - 2 coat chemical of Acrylic base (Sika, Arment, Dr.FixIt Equivalent)- Leveling with Cement, Sand Ghotai	R.ft	800/-
10	Chemical coating to Floor / Wall	surface preparation - crack filling - primer coating - 2 coat chemical -Acrylic base coating.	Sq.ft	28/-
11	Chemical coating to Floor / Wall	surface preparation - crack filling - primer coating - 2 coat chemical - PU Coating	Sq.ft	65 - 110/-
12	Epoxy Flooring / Coating	surface preparation - crack filling - primer coating - 2 coat chemical.	Sq.ft	75 - 250/-
13	Only Crack filling	surface preparation - crack filling.	Sq.ft	8/-
14	Injection Grouting	with Cement Slurry	Nos	950/-
15	Injection Grouting	with Epoxy Grouts	Nos	1850/-
B	Painting Works			
1	Oil Bond with Putty	L+M	Sq.ft	18/-

2	Tractor Emulsion with Putty	L+M	Sq.ft	20/-
3	Oil Luster with Putty	L+M	Sq.ft	35/-
4	Water Luster with Putty	L+M	Sq.ft	37/-
5	Premium with Putty	L+M	Sq.ft	39/-
6	Royal Paint with Putty	L+M	Sq.ft	40/-
7	Ace Paint	L+M	Sq.ft	16/-
8	Apex Paint	L+M	Sq.ft	20/-
9	Ultima	L+M	Sq.ft	28/-
10	Grill Paint	L+M	R.ft	15/-
11	Door Paint	L+M	Sq.ft	18/-
12	Polish	L+M	R.ft	70/-

Terms and Conditions

- 1 35% Advance along with work confirmation / work order and remaining as per work flow.
- 2 18% GST Extra.
- 3 Water and Electricity provided by client free of cost.
- 4 Labour accomodation provided by client.