

Bright Castle Group.

Foundation of Excellence...

A13, 02, Tirumala Residency, Dhayari, Pune -411041

Contact

7559179180 / 7798885506

www.BrightCastleGroup.com

BrightCastleGroup@gmail.com



GSTIN : 27BVHPP2820E1ZP

PAN : BVHPP2820E

BrightCastle Group: Your Trusted Partner in Protection and Aesthetics

Established in 2010, we are a trusted name in Pune, specializing in comprehensive waterproofing, painting, and epoxy flooring solutions. Our experienced team delivers high-quality services across Maharashtra and beyond, protecting and enhancing properties with innovative and reliable solutions.

We're dedicated to providing innovative, reliable, and cost-effective solutions that exceed our clients' expectations. Trust BrightCastle Group to deliver excellence in every aspect of our work.

Partnering with Industry Leaders

At BrightCastle Group, we partner with renowned international brands to ensure the best waterproofing solutions for our clients. Our trusted product portfolio includes : MYK, MARIS-POLYMERS, KEMPER, KERAKOLL, MAPAI,SIKA, ALCHIMICA.

Our Expertise:

- 1 Waterproofing solutions for buildings, roofs, and foundations and more.
- 2 High-quality painting services for residential and commercial projects
- 3 Epoxy flooring solutions for industrial, commercial, and residential applications

Our Mission:

To be the leading provider of waterproofing, painting, and epoxy flooring solutions, built on a foundation of quality, integrity, and customer satisfaction.

Our Vision:

To create a safer, more beautiful, and sustainable built environment, one project at a time.

Why Choose Us?

- 1 Experienced team of professionals
- 2 Commitment to quality and customer satisfaction
- 3 Innovative and reliable solutions
- 4 Cost-effective services
- 5 Timely project completion

At BrightCastle Group, we take pride in our work and are dedicated to delivering excellence in every aspect of our services.

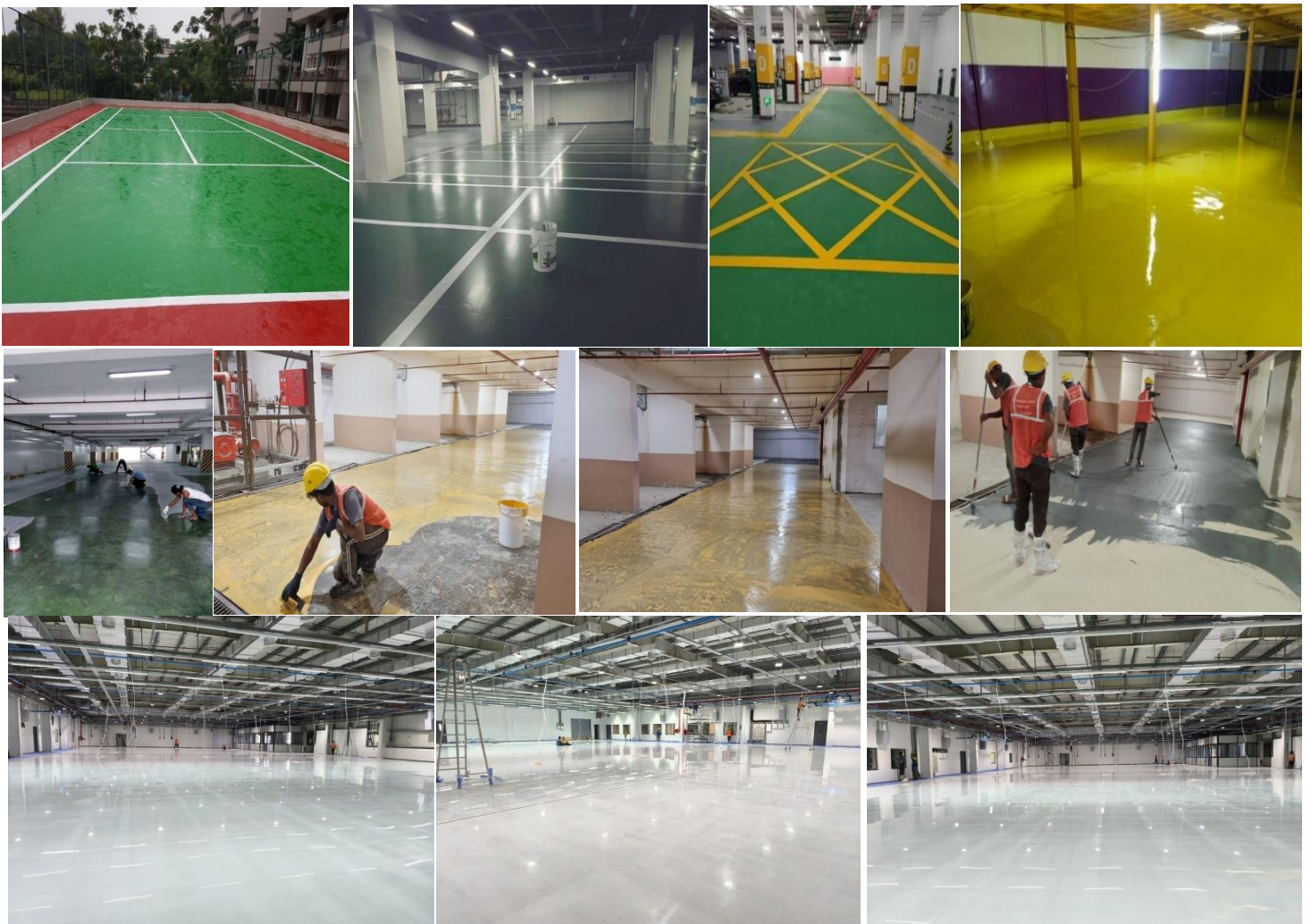
We are proud to collaborate with leading industry partners and associates to deliver comprehensive solutions. Our authorized applicators and partners include :



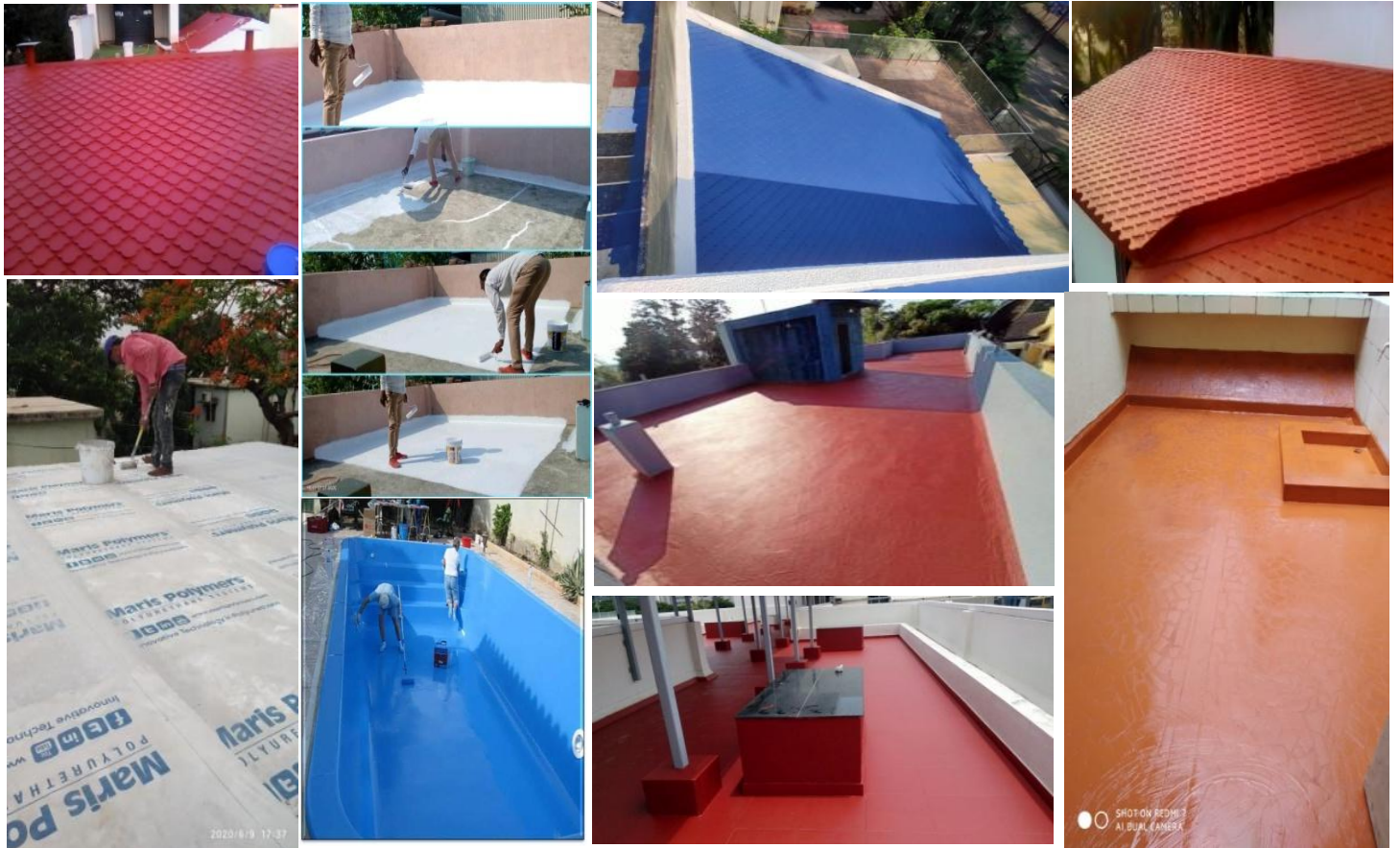
HDPE Work and SBS Works



Epoxy Works (Car Parking, Flooring systems)



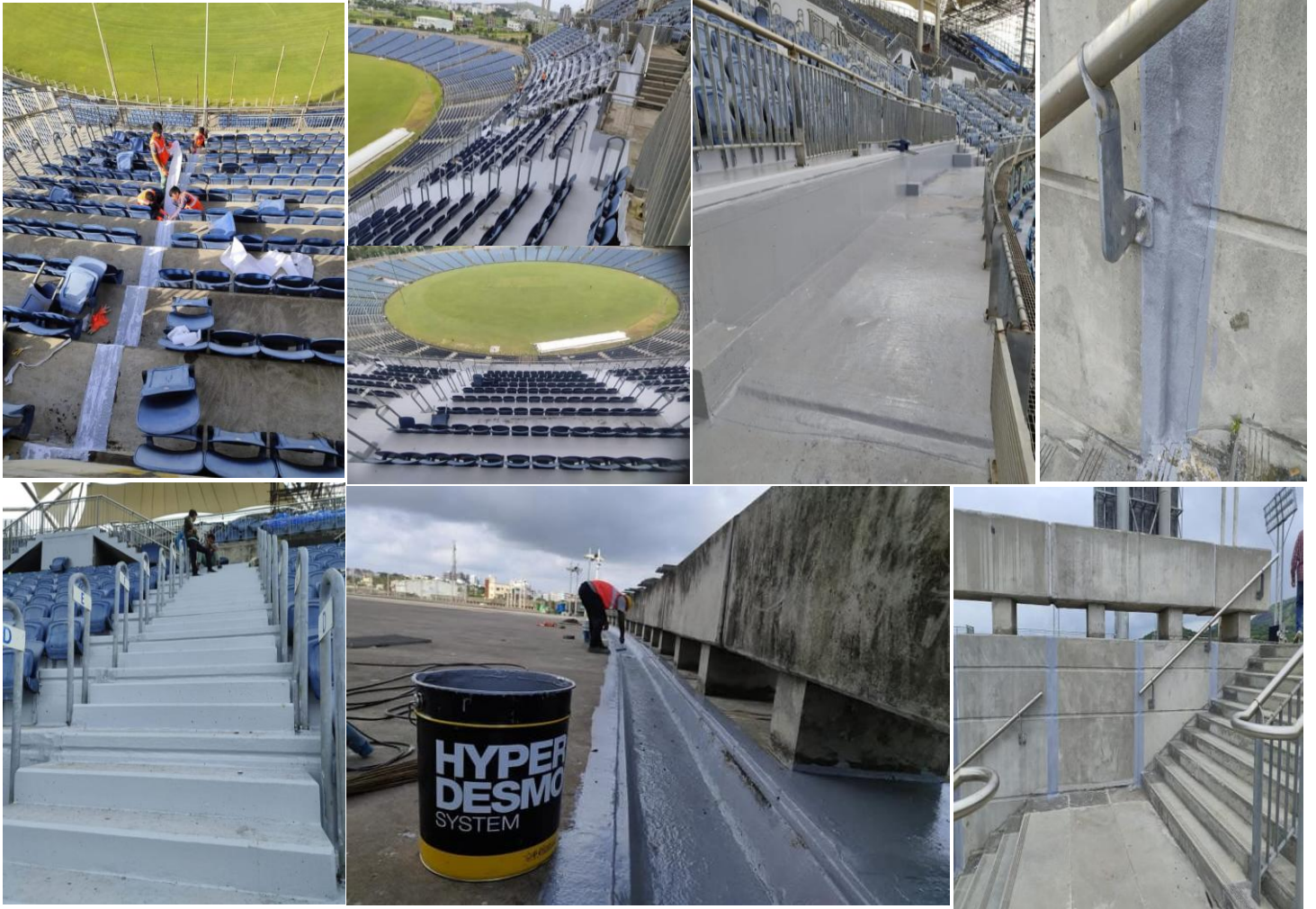
PU/Acrylic Base coatings.



Kemprol V210 and Expansion Joints.



MCA Gehunje Stadium Waterproofing Works.



KwickFix Solution (Kwickfelt PP)

